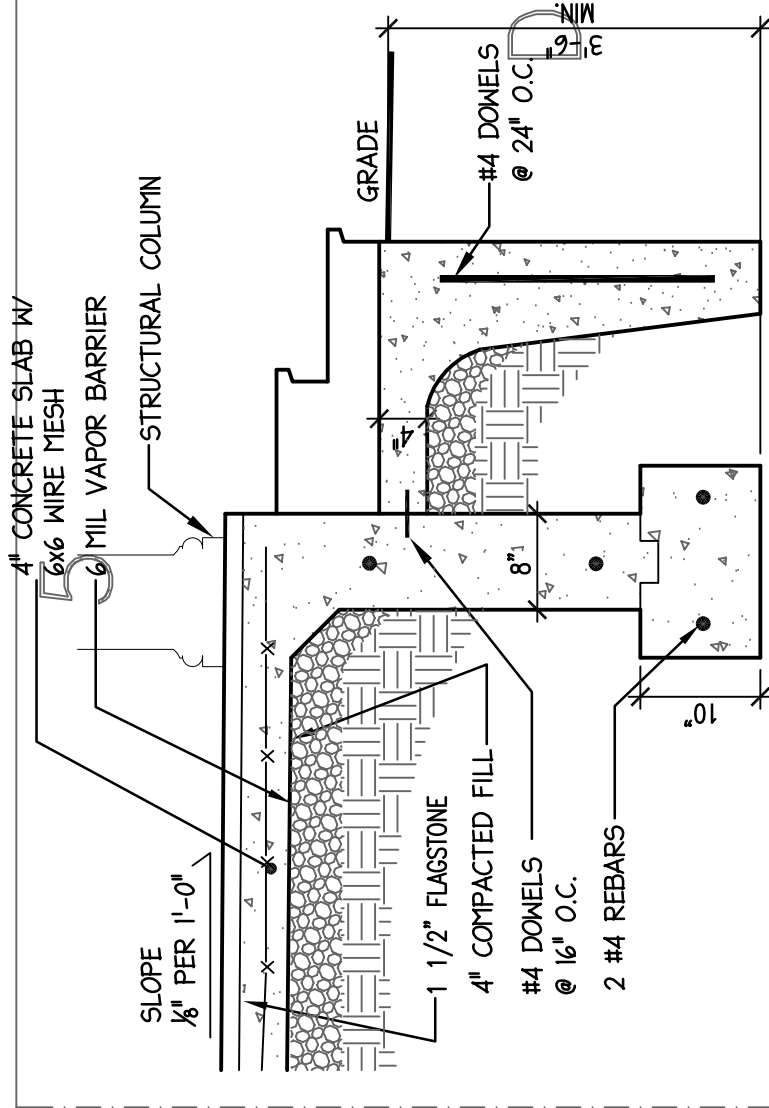


Project:
Additions / Renovations of the
KOOPMANN RESIDENCE
33 PINE POINT ROAD
ROWAYTON, CT 06853

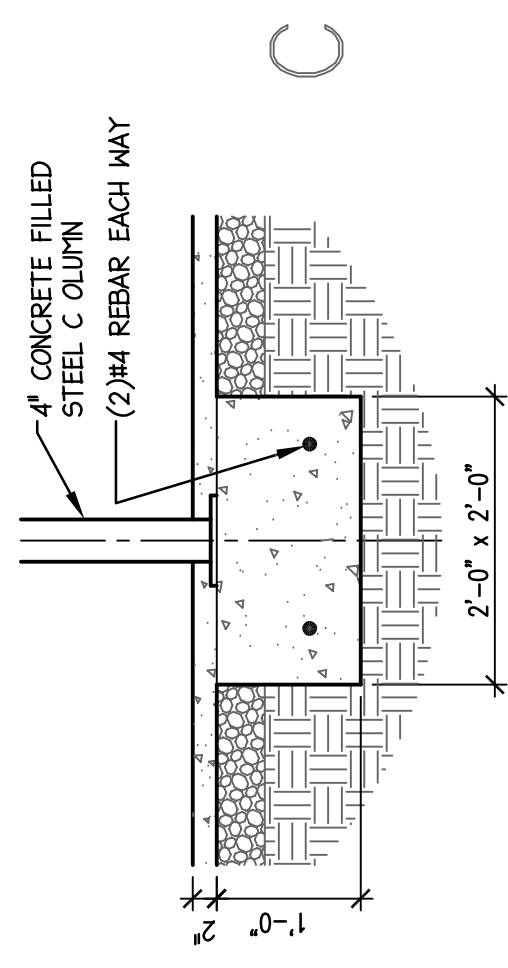
Owner:
**PAUL & KELLY
KOOPMANN**
33 PINE POINT ROAD
ROWAYTON, CT 06853
TEL: (203) 852-1554

**STRUCTURAL
DETAILS**

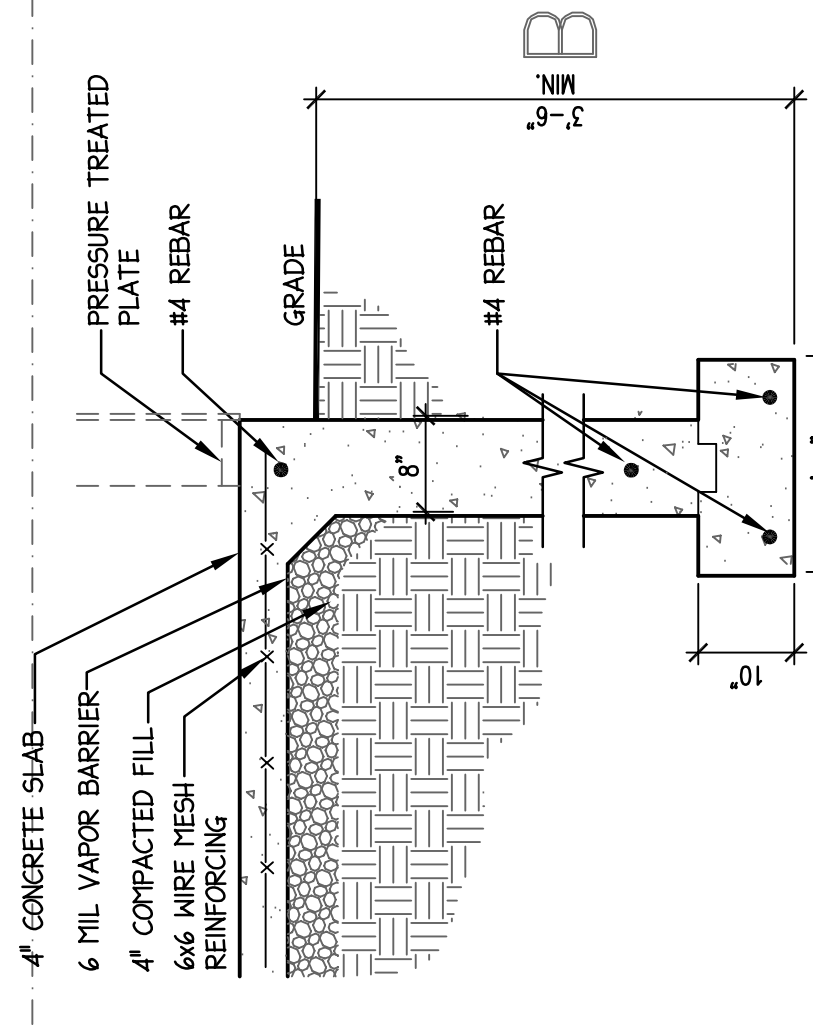
S-501
SHEET 4 OF 12



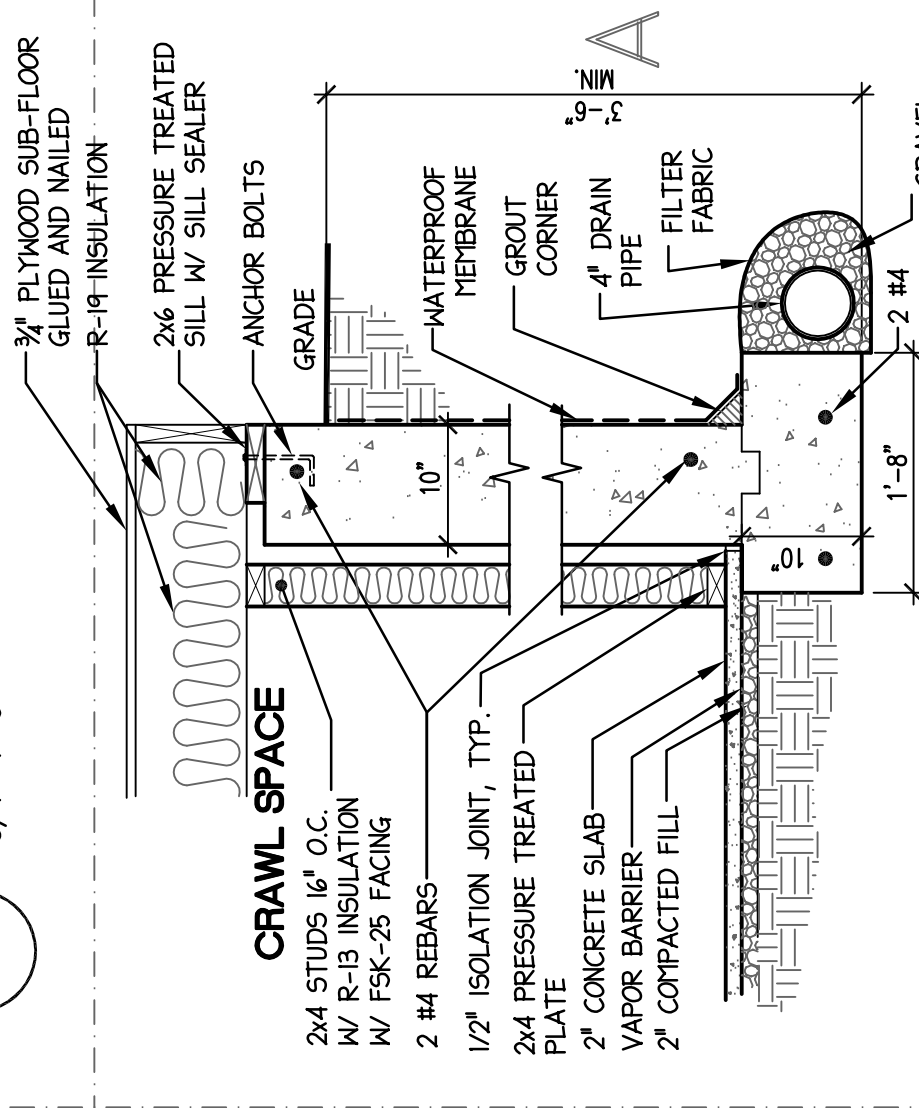
D5
FOUNDATION SECTION
@ FRONT PORCH
3/4"=1'-0"



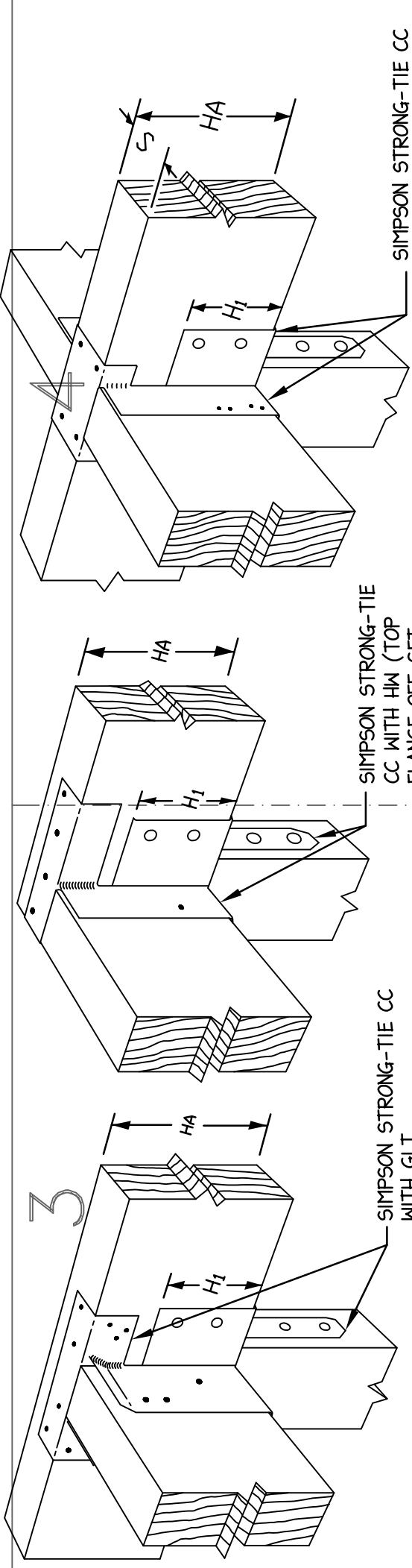
C5
COLUMN FOOTING DETAIL
3/4"=1'-0"



B5
FOUNDATION SECTION
@ SLAB ON GRADE
3/4"=1'-0"

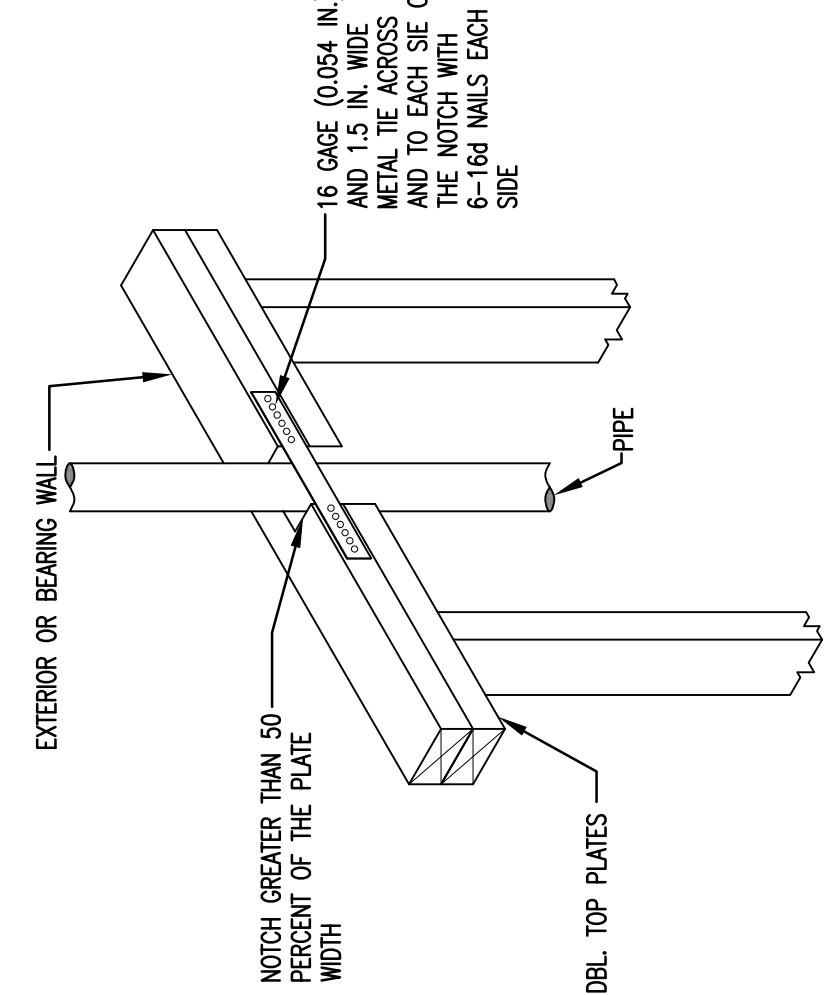


A5
FOUNDATION SECTION
3/4"=1'-0"

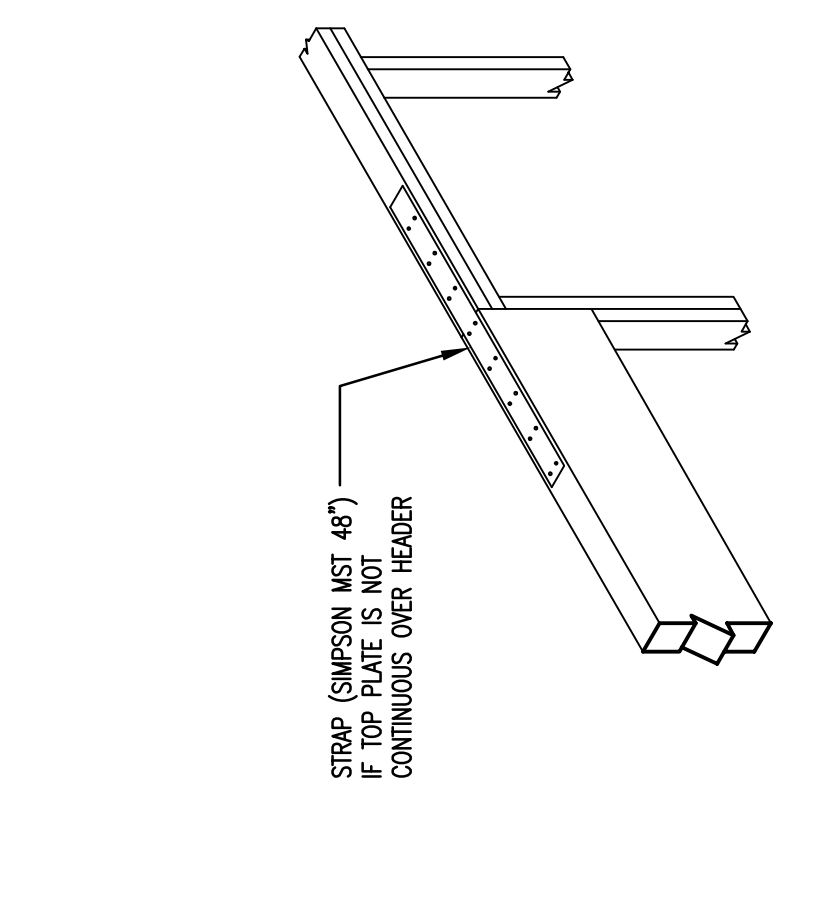


NOTE:
SPECIFIED HANGERS ARE FOR HEAVY REACTION LOADS.
CONSULT PRODUCT LITERATURE FOR MORE ECONOMICAL
HANGERS FOR LIGHTER LOAD CONDITIONS WHERE APPLICABLE.

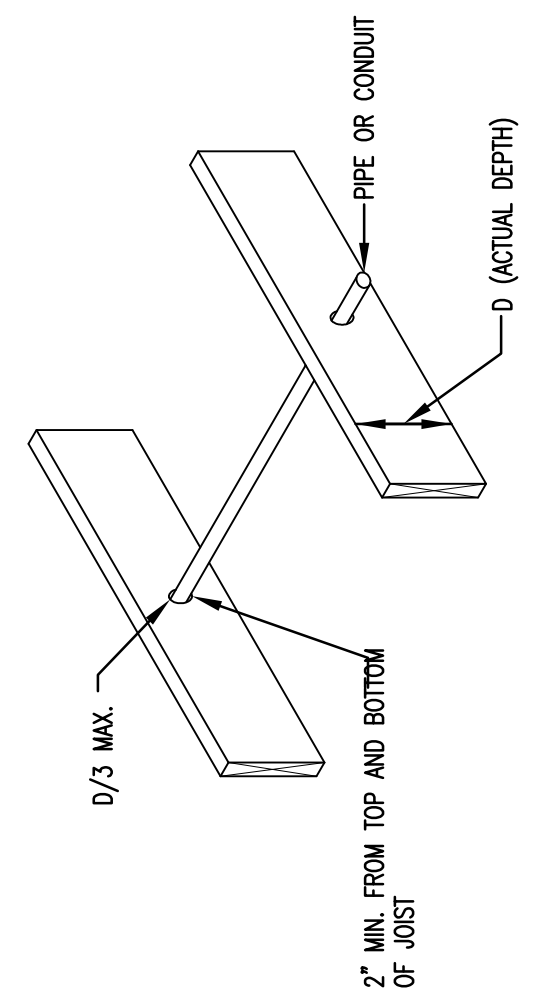
D3
TYPICAL SIMPSON BEAM CONNECTIONS
N.T.S.



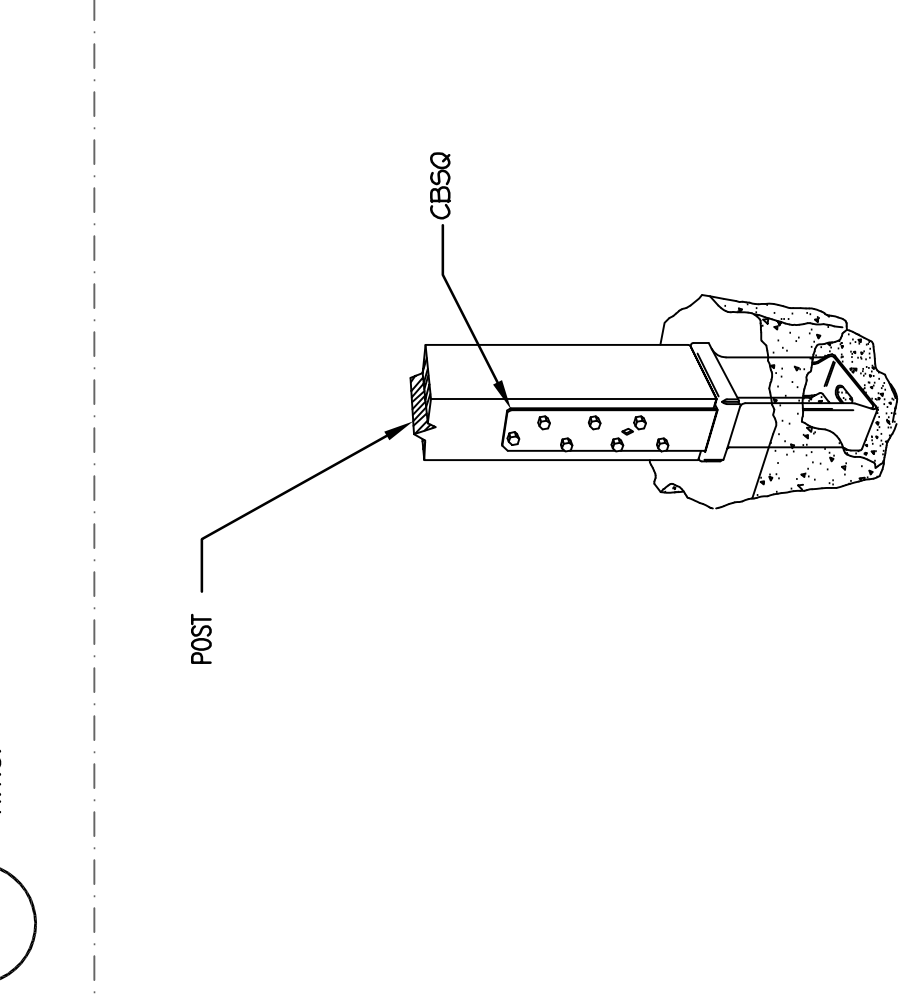
C4
FRAMING DETAIL
N.T.S.



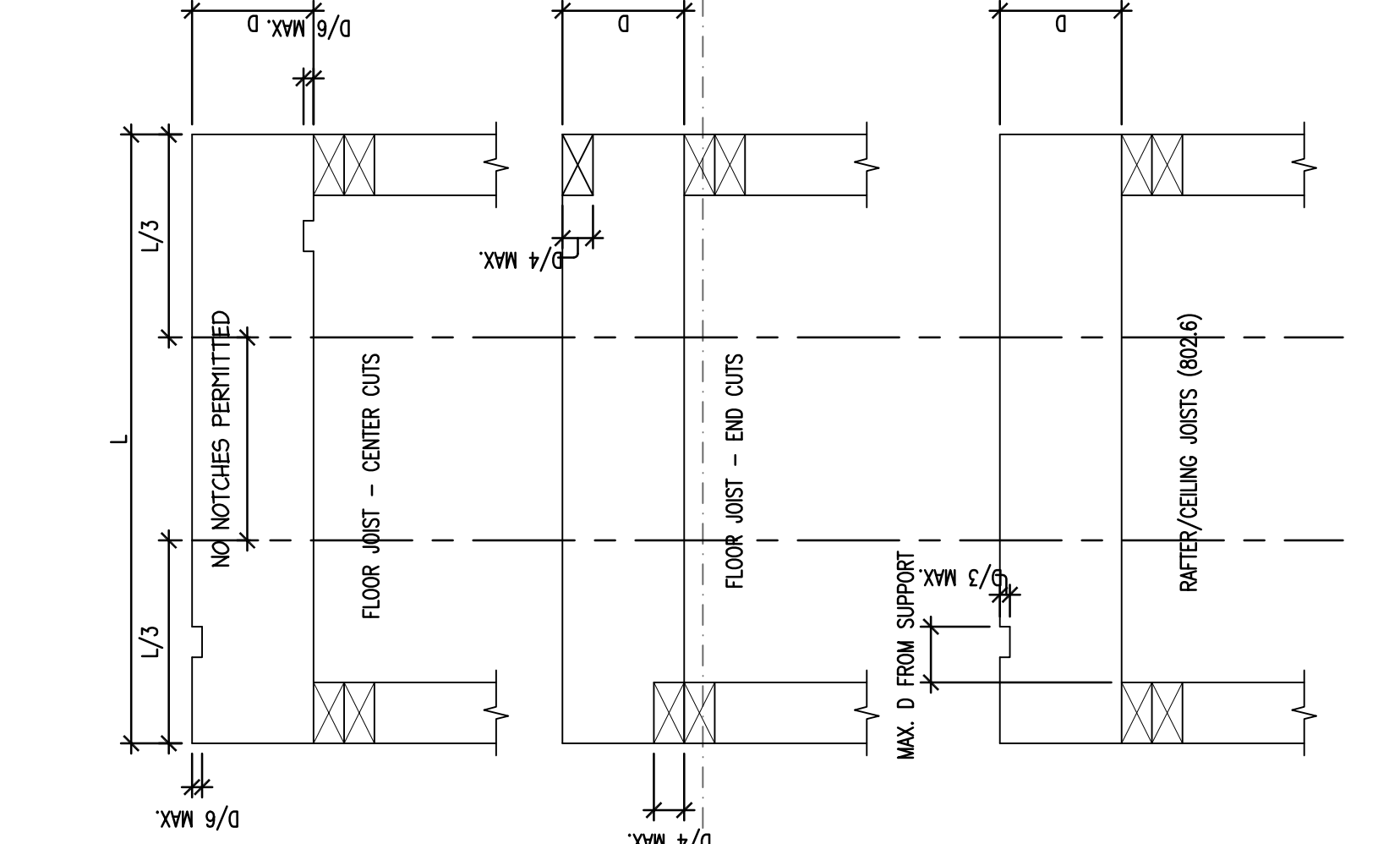
C3
HEADER CONNECTION DETAIL
N.T.S.



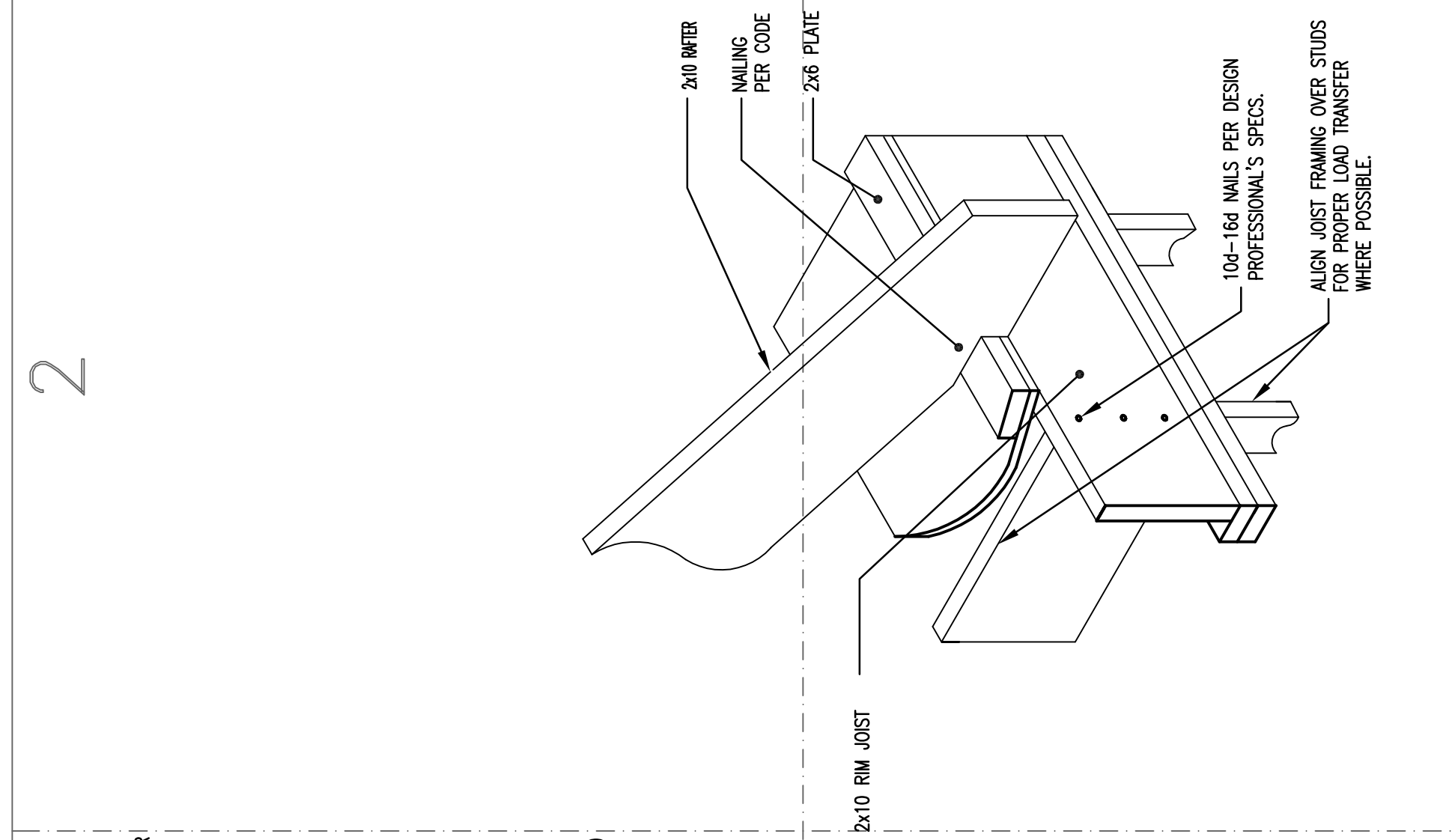
B4
JOISTS ALLOWABLE
HOLE REQUIREMENTS
N.T.S.



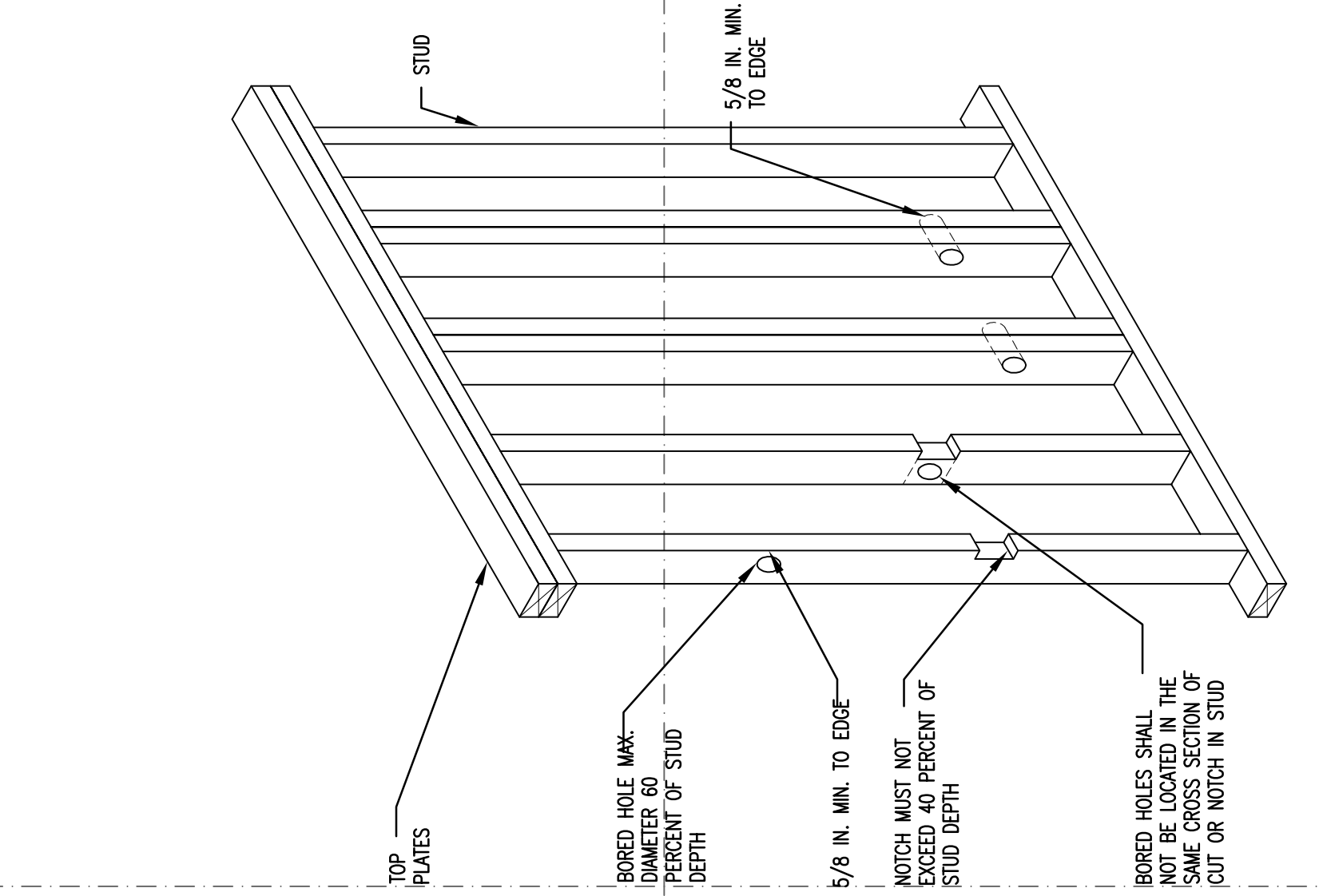
A4
SIMPSON POST HOLD-DOWN
N.T.S.



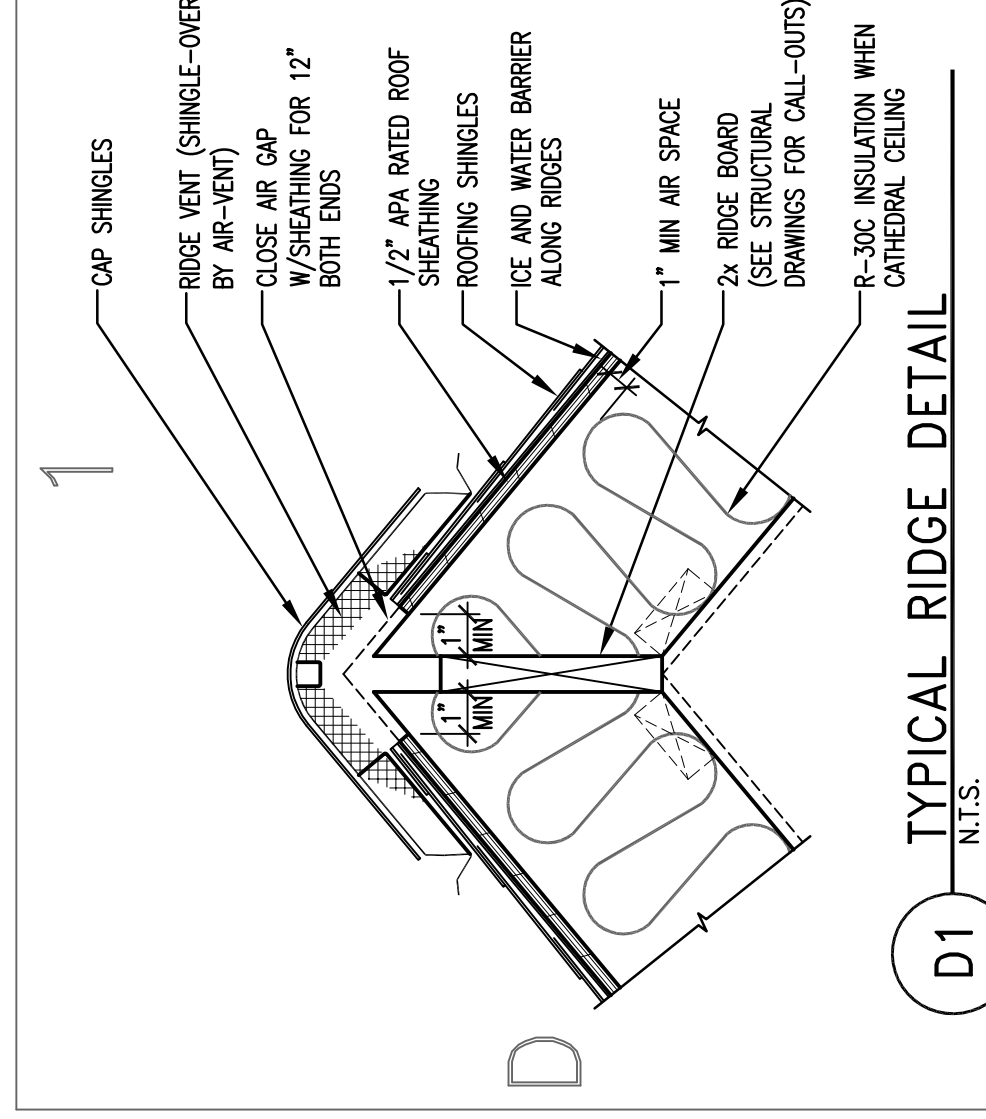
A3
DIMENSIONAL JOISTS
ALLOWABLE HOLE REQUIREMENTS
N.T.S.



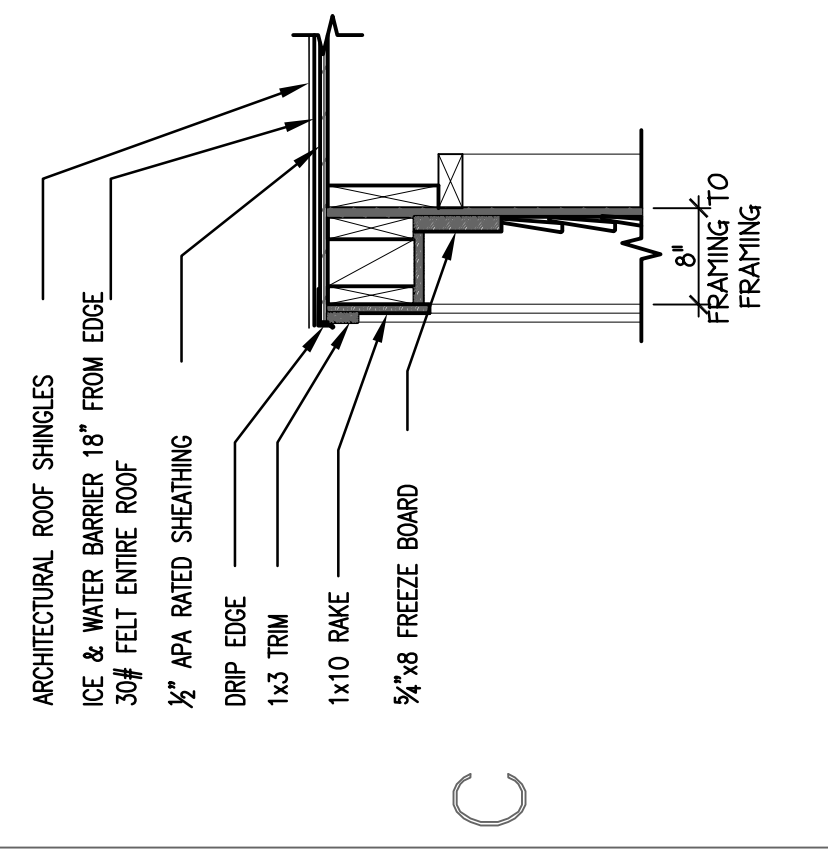
C2
RAISED RAFTER BEARING
N.T.S.



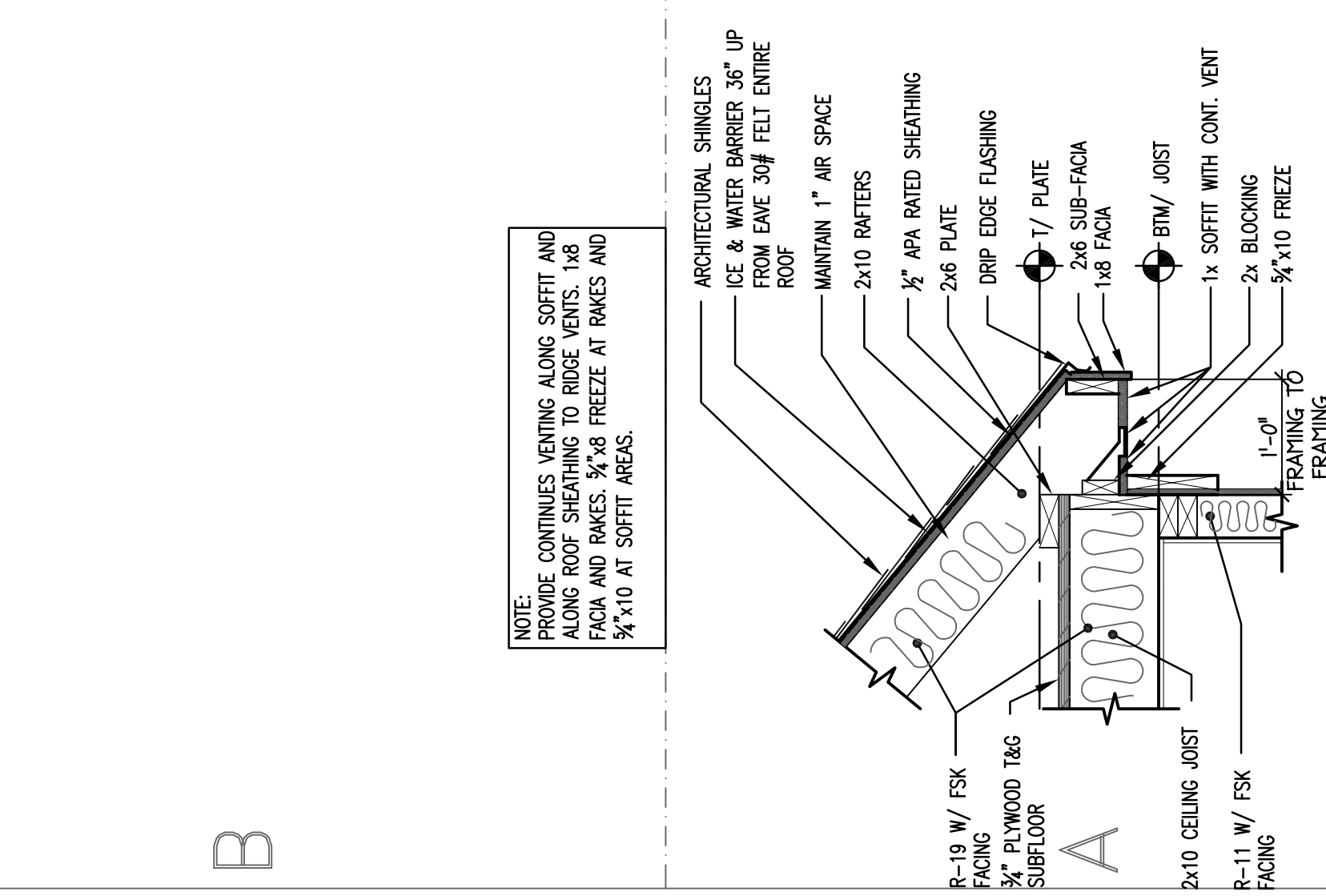
A2
WALL FRAMING
ALLOWABLE HOLE REQUIREMENTS
N.T.S.



D1
TYPICAL RIDGE DETAIL
N.T.S.



C1
TYPICAL RAKE DETAIL
3/4"=1'-0"



A1
FACIA DETAIL
(MAIN HOUSE)
3/4"=1'-0"